

EAR TRAINING BASICS CORRECTIONS

Student Books Levels 8-10 and Teacher Book 8-10: The last number of the ISBN on the title page is incorrect in each book. ISBN numbers on the barcode are correct. Correct numbers are:

Level 8: 978-1-891757-23-5

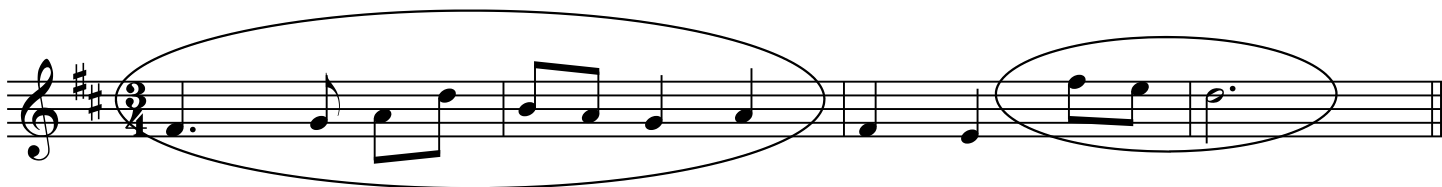
Level 9: 978-1-891757-24-2

Level 10: 978-1-891757-25-9

Teacher 8-10: 978-1-891757-26-6

Teacher Book, Levels Prep-3

Page 76, Number 1: The answer has an incorrect rhythm in second measure. The correct rhythm is:



Teacher Book, Levels 4-7

Page 145, Number 4d: Minor 7th (not Diminished 7th; the notation on the staff is correct)

Teacher Book, Levels 8-10

Page 32, Number 4 b should be in root position:



Page 44, Number 3b should be minor



Page 52, Number 5c should be diminished 7th:



Page 55, Number 7: Change the instructions to "Mark the Roman numerals that represent the progression."

Page 61, Number 6: Change the instructions to "Play the following chord progression. In the student workbook, the boxed chords are missing the soprano, Roman numerals, and figured bass. Ask the student to draw the missing notes and Roman numerals."

Page 67, Number 6, typo: "Mark the Roman numerals that represent the progression."

Page 73, Number 3: the last note in the bass clef should be a quarter note

Level 9 Student Book

Page 38, Number 6: The Roman numerals are misaligned. Change to:

_____ iv V⁷ i
iv ___ i ___ i₄⁶ V⁷ i

Page 54, Number 6, change the instructions to: "Your teacher will play a chord progression. The boxed chords are missing the soprano and chord symbols. Draw the missing notes, Roman numerals, and figured bass . The example will be played three times."

Page 69, Number 4: delete question **b**. There is only one example to be completed.

Level 10 Student Book

When students are asked to identify Augmented triads with quality and inversion, accept any inversion. Augmented triads sound the same in all three inversions.

Page 45

Number 1: The second measure is incorrect: F double-sharp is missing from first note.



Number 2b: The first note should be A-sharp, not A.

